

## How to connect Xiro Xplorer Camera preview:

1. Make sure your home wifi signal is off before starting
2. Turn on drone power and remote controller
3. Hold and press down the Gimbal camera button on Gimbal module for 10 seconds and release. This step will active camera hidden SSID.

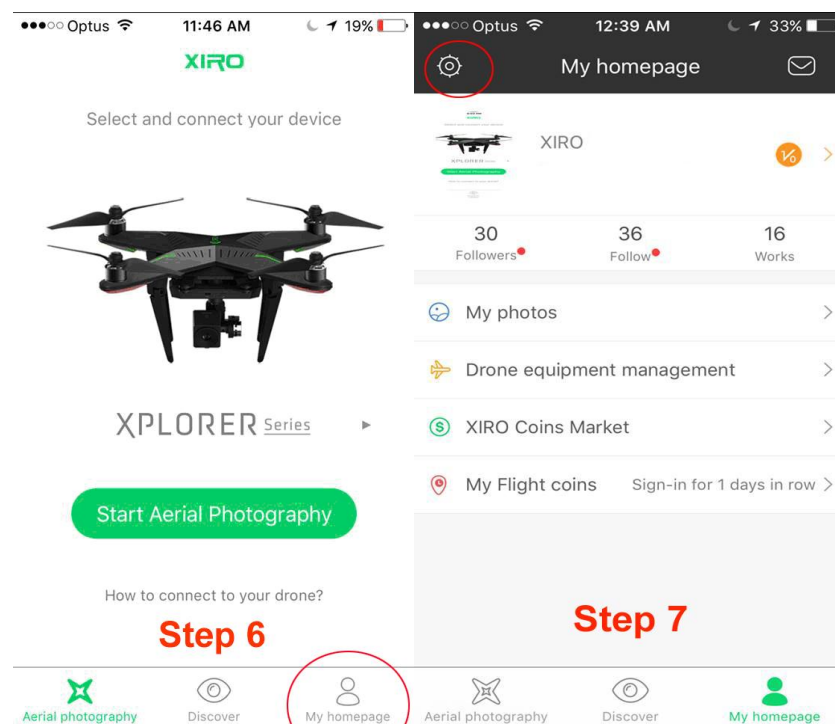
Press down and hold for 10 seconds



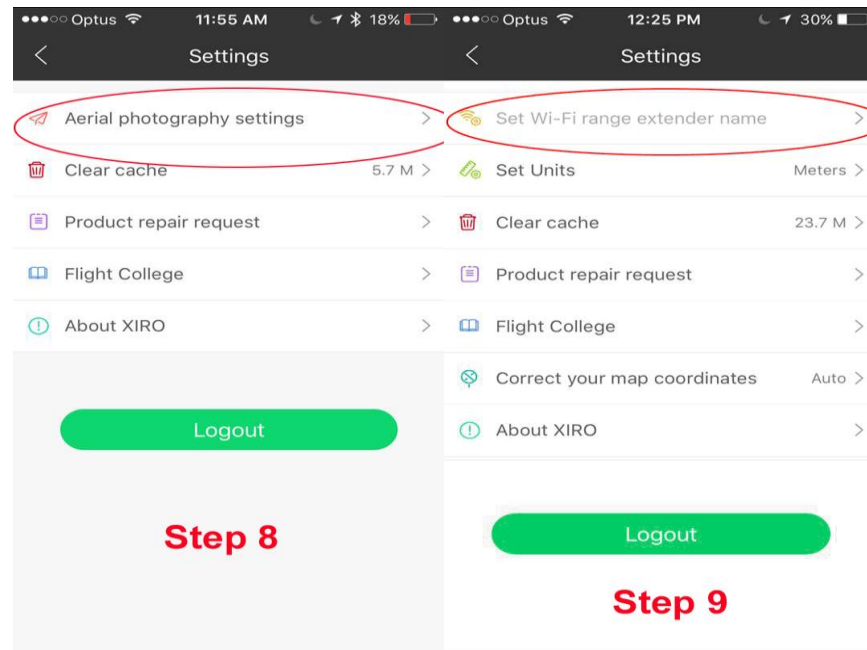
Press down and hold for 10 seconds



4. Your phone wifi shall able to see Gimbal camera wifi SSID UG3300ENXXXXXX
5. Your phone wifi must connect Xplorer\_XXXXXX SSID.
6. Open Xiro App and click My homepage at bottom right
7. Click **settings icon** at top left hand side



8. Click aerial photography settings
9. Click set wifi range extender name

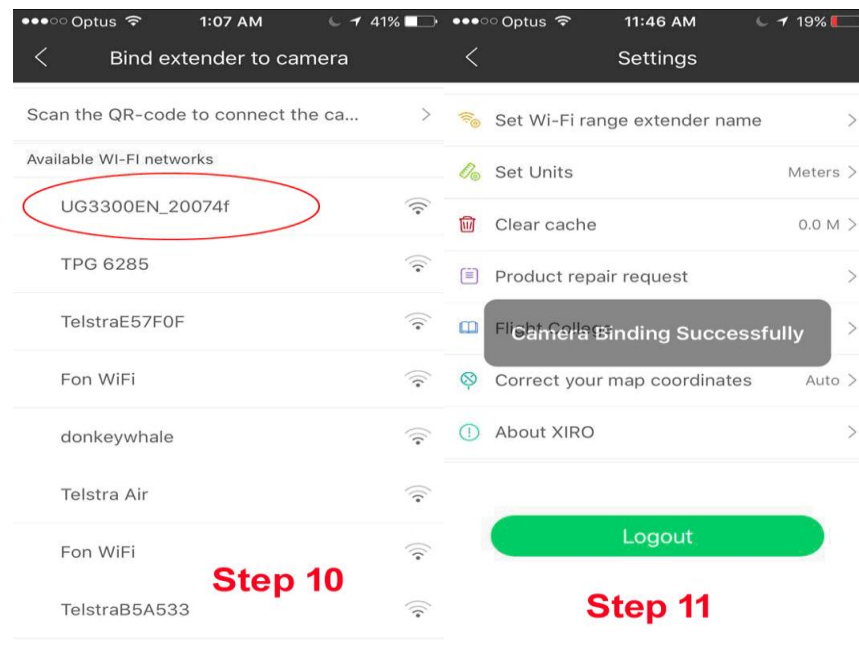


10. At available WI-FI networks

Select UG3300ENXXXXX (Gimbal camera ssid)

Input password 4008073888 if require.

11. Now Blinding successful



12. Wait 1-2 minutes the wifi indication led on remote controller will change from red to green.

Connect your phone wifi to Xplorer wifi SSID Xplorer\_XXXXXX, and open Xiro app.

Start aerial photography.